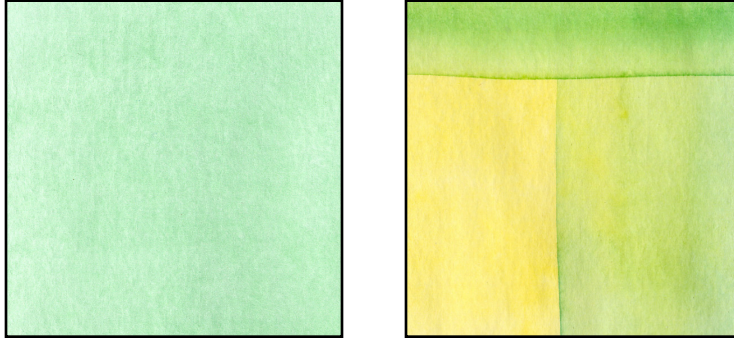
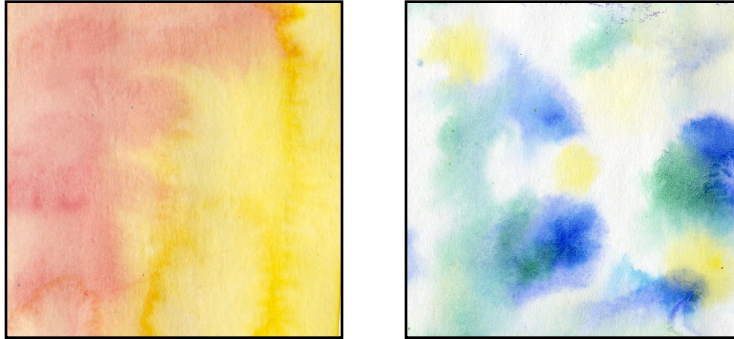


Watercolor: Basic Techniques

Wash (Wet-on-Dry) - A wet brush on dry paper



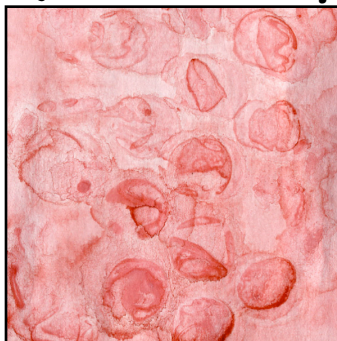
Bleed (Wet-on-Wet) - A wet brush on wet paper



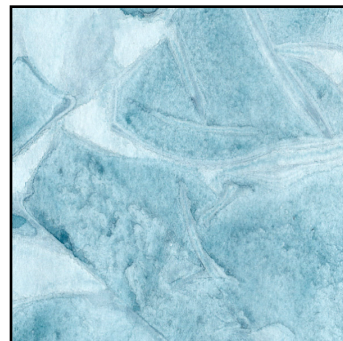
Lift - Press objects into wet paint and lift



Paper Towel

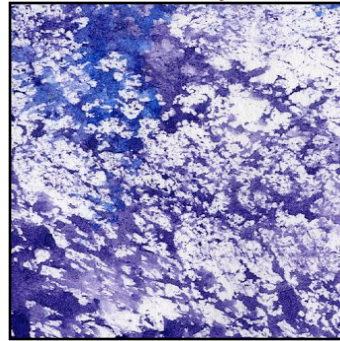
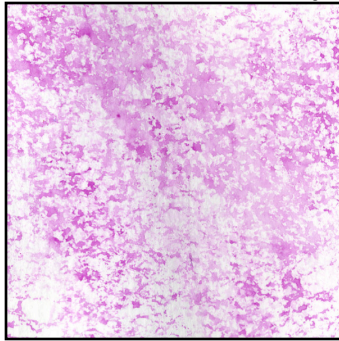


Bubble Wrap

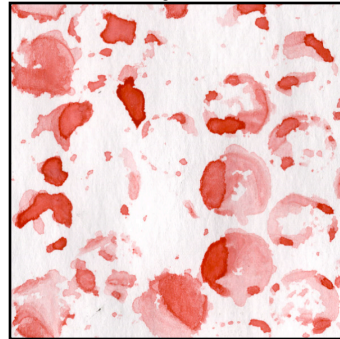
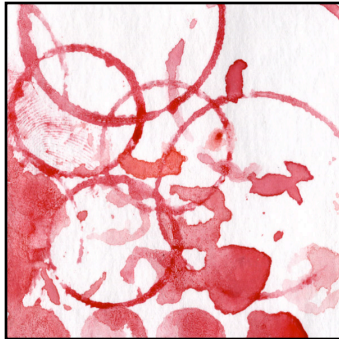


Plastic Wrap

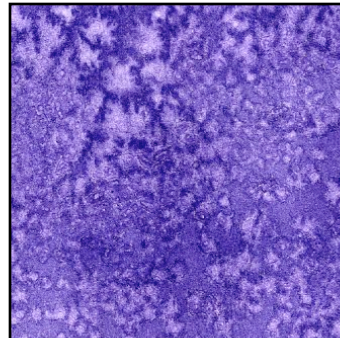
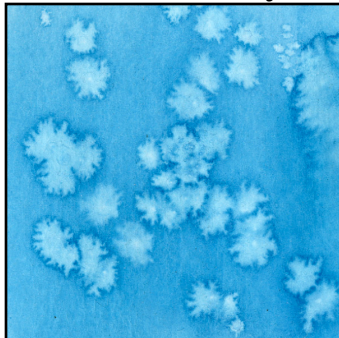
Sponge - Paint a sponge and stamp with it



Stamp - Paint an object like bubble wrap and stamp with it



Salt - Sprinkle salt into wet paint, let it dry, and brush away the salt



Stipple - Use a toothbrush and your finger to splatter the paint

